

CROCHET SWEATER SUMMERSTYLE

Pratamedrut.se

CROCHET SWEATER



THE PARTS

Front

Back

Sleeves

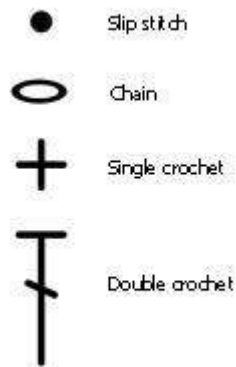


CHARTS

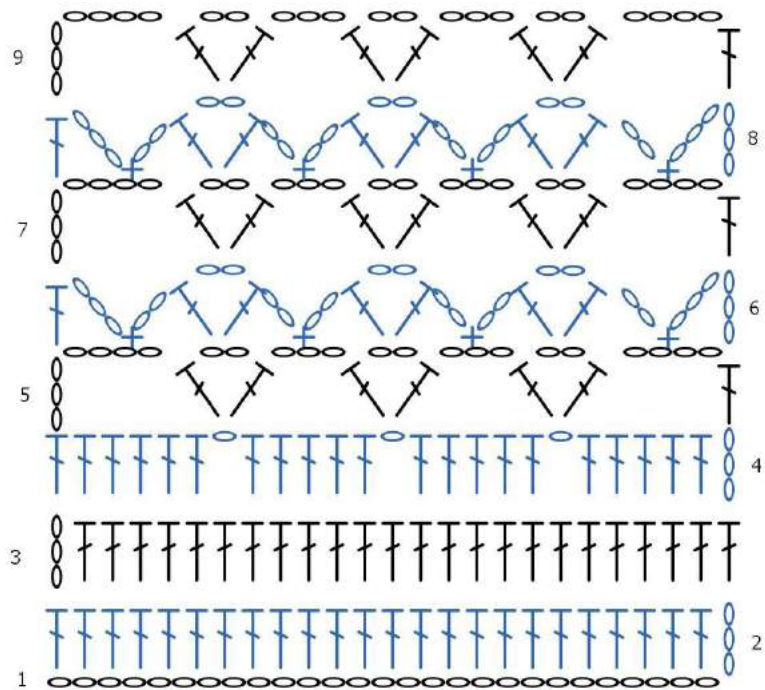
3 different charts.

1. Front and back. First row with chain should be a **multiple of 6**.
2. Neckline front and back, right and left.
3. Sleeves. First row with chain should be a **multiple of 6**.

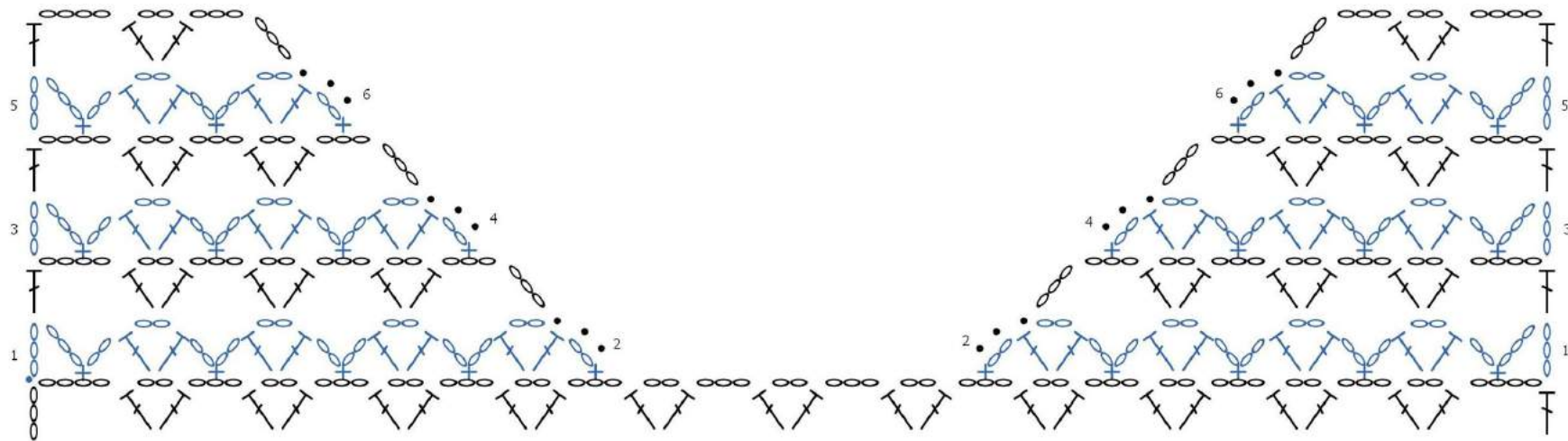
Symbols



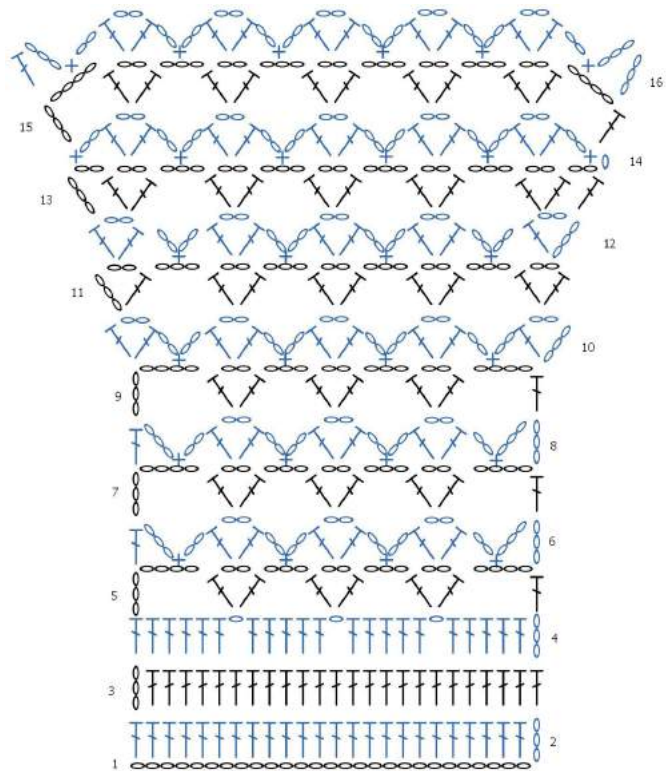
FRONT AND BACK



NECKLINE



SLEEVES



ASSEMBLING

Sew (or crochet) together front and back part. Crochet dc evenly around the neckline. Crochet two more rounds of dc around.

Sew (or crochet) the sleeves to the body and sew together the sides.